

DYNAMO 4 PRO STADIUM FLOOD LIGHT

IMPORTANT SAFEGUARDS

Cautions:

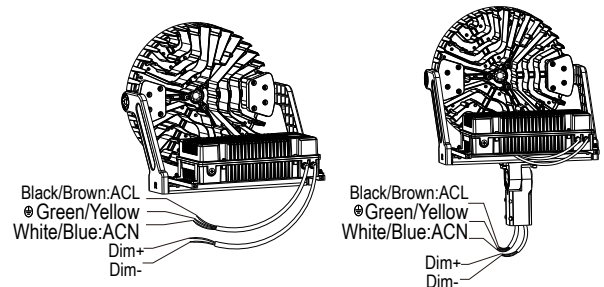
- The product must be installed, inspected, and maintained by a qualified electrician in compliance with local and national electrical safety regulations.
- Power must be turned off before installation, inspection, or removal.
- Ensure the operating voltage is within the specified range.
- Use UL-compliant wiring: minimum 16 AWG for AC 120-277V and 18 AWG for AC 277-480V.
- Do not install in hazardous environments. Ensure the ambient temperature does not exceed the product's rated operating temperature.
- Do not install in hazardous environments or exceed the rated ambient temperature.
- Avoid installation during rainfall to minimize lightning risks and electrical hazards.
- Prevent direct eye exposure to the illuminated light source.
- Do not test the LED lamp using an electric generator.
- Only use passive dimmers compatible with external 0-10V control.

Wiring Diagram:

Note: Use the DIM+ and DIM- (DC 10V) marked leads to connect to an external dimmer. Only Class 1 wiring is permitted.

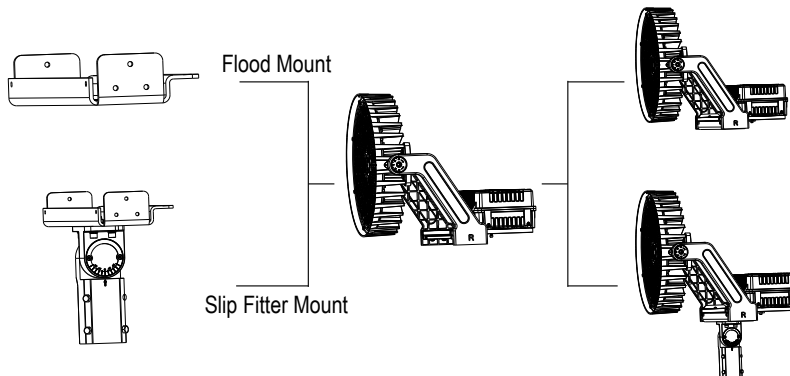
Maintain a cumulative leakage current below 3.5mA in the control circuit.

The AUX control wire with shrinkable tubing must remain intact and unconnected.



Optional Brackets and Installation Instructions:

There are two optional brackets available for this fixture. Below are the sport light fixtures with different bracket options.



Power Box Installation Instructions:

To install the power supply box, loosen the four M6 bolts, slide it along the guide rail, and securely tighten the nuts (Figure 1).

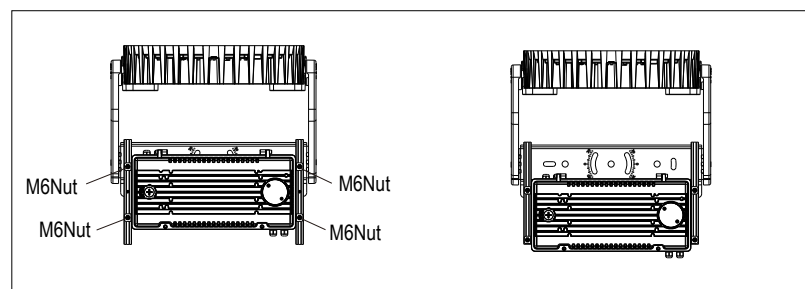


Figure 1

Installation of LED Lamps:

Flood Mounting Bracket Method I (Pole Mounting):

1. Measure and mark the hole spacing (S1 or S2) as indicated on the product (Figure 2).
2. Drill two holes at the marked spacing (S1 or S2) on the mounting bar (Figure 3).

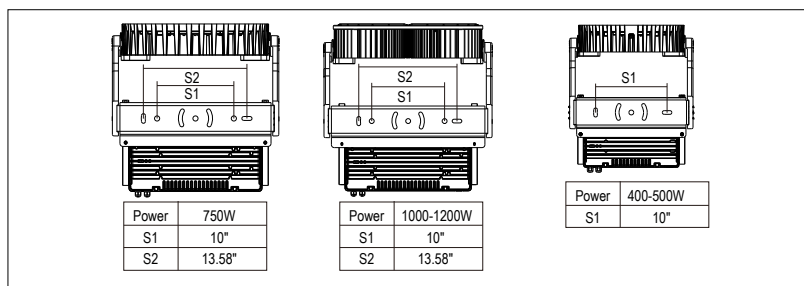


Figure 2

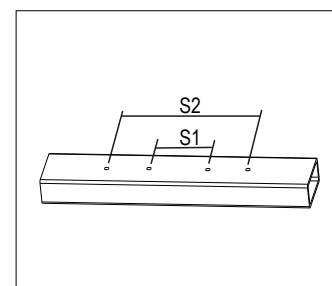


Figure 3

3. Mount the luminaire onto the crossbar and secure it using nuts, spring washers, and flat washers (Figure 4).
4. Adjust the angle by loosening the adjustment screw with a hex wrench (Figure 5).

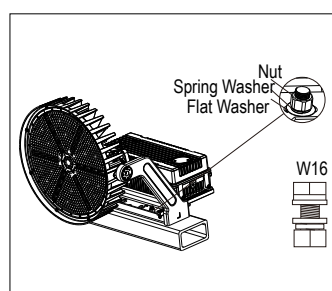


Figure 4

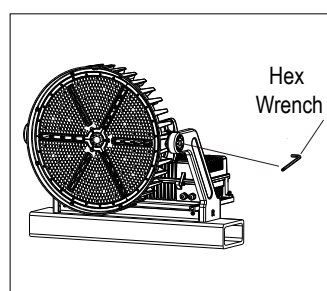


Figure 5

5. Adjust the projection angle within the specified range as required (Figure 6).
6. Secure the position by tightening the adjustment screw once the desired angle is set.
7. Follow the wiring diagram to select and complete the preferred rewiring method.

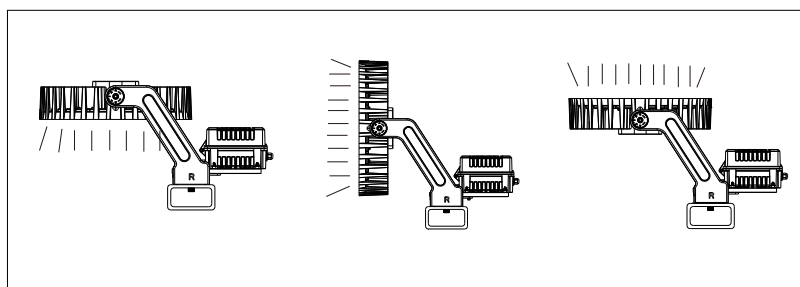


Figure 6

Flood Mounting Bracket Method II (Disc Holder Installation):

1. Adjust the lighting direction as needed with 360° rotation, then secure it by tightening the screws (Figure 7).
2. Use a hex wrench to loosen the adjustment screw for angle modification (Figure 8).

DYNAMO 4 PRO STADIUM FLOOD LIGHT

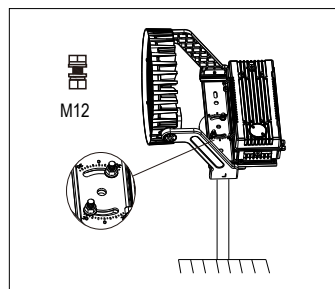


Figure 7

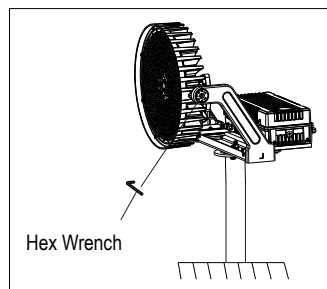


Figure 8

3. Adjust the projection angle within the specified range as needed (Figure 9).
4. Once the desired angle is set, tighten the adjustment screw to lock it in place.

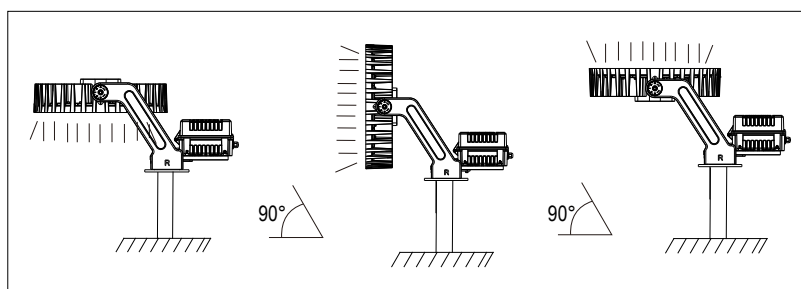
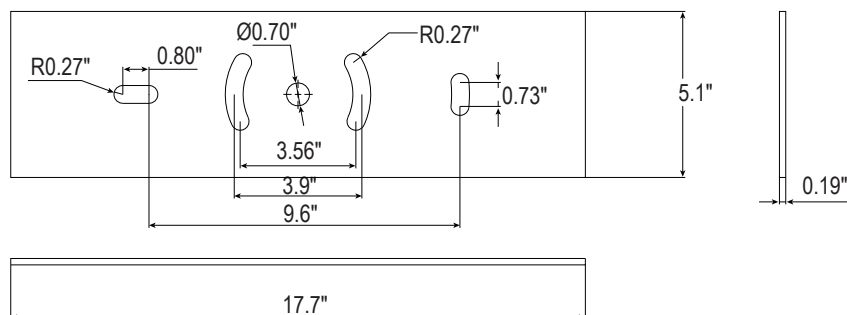


Figure 9

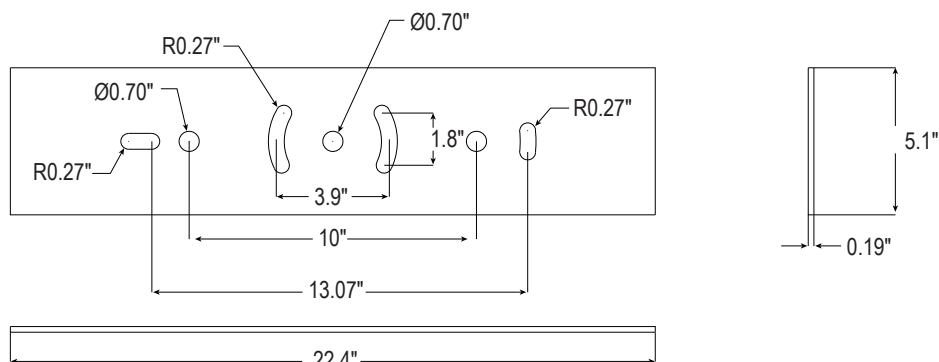
Flood Mounting Drill Hole Pattern:

- 400W-500W

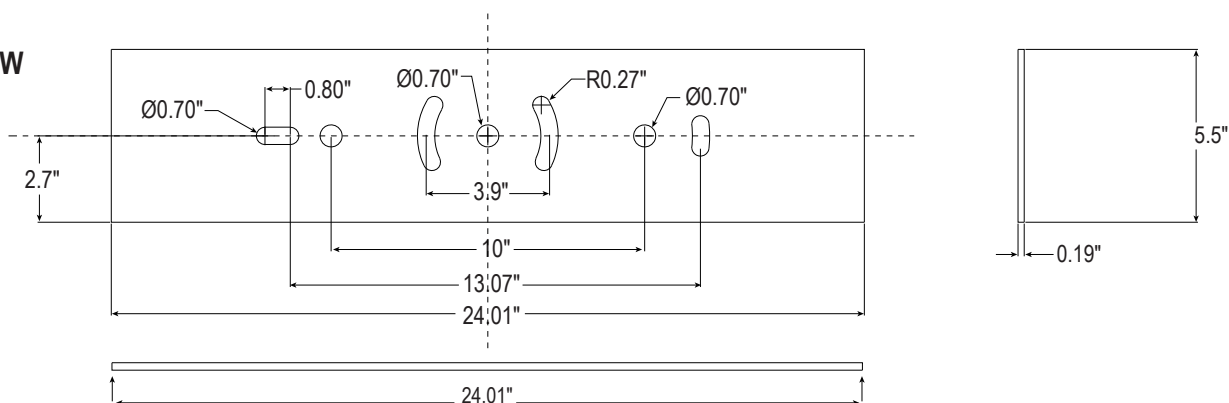


DYNAMO 4 PRO STADIUM FLOOD LIGHT

- 600W-750W



- 1000W-1200W



Slip Fitter Mounting Bracket:

1. Loosen the four bolts on the SF bracket, connect the wires properly, and route them through the pole (Figure 10).
2. Insert the bracket into the pole and securely tighten the four bolts (Figure 11).

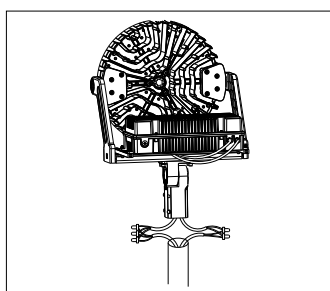


Figure 10

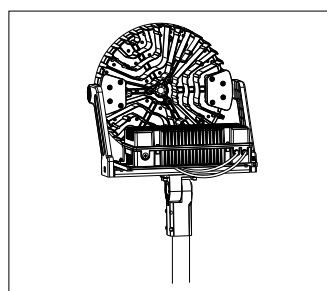


Figure 11

3. Use an open-end wrench and hex wrench to loosen the adjustment screw for angle modification (Figure 12).

Note: The adjustable angle range spans from 0° to 90°.

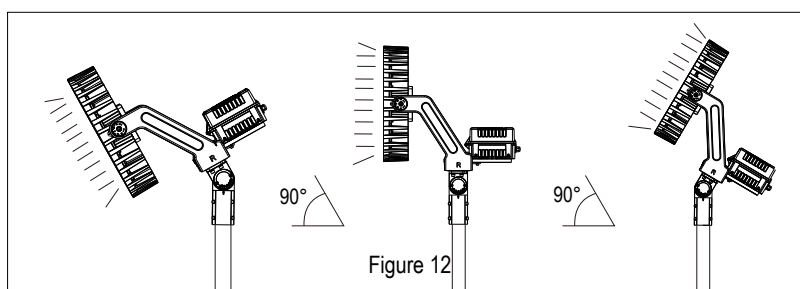


Figure 12

DYNAMO 4 PRO STADIUM FLOOD LIGHT

Instructions for Light Shield:

If the light shield function is needed, secure the light barrier to the luminaire using a screwdriver (Figure 13).

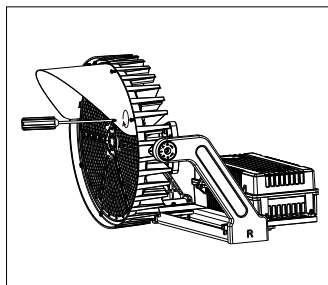


Figure 13

Instructions for Photocell:

For photocell functionality, install the photocell on the back of the lamp as needed. If not required, use a shorting cap instead (Figure 14).

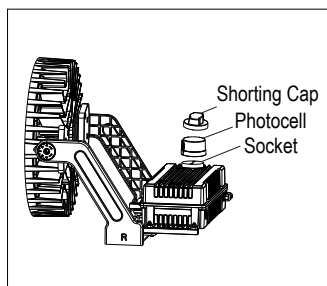


Figure 14

Instructions for Power Selectable Feature:

To enable power selectability, remove the plug and adjust to the desired tap position (Figure 15).

Power Selectable: 300W-400W-500W-600W

Power Selectable: 750W-1000W-1200W

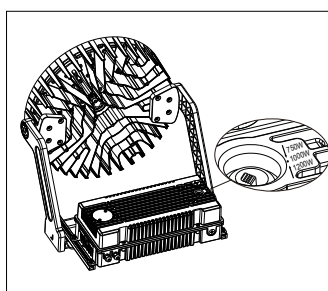


Figure 15

Important:

This product must be installed in compliance with applicable installation codes by a qualified individual familiar with its construction, operation, and potential hazards. All luminaire components are non-replaceable and should not be serviced.